



TrakLand/2000® Inventory Management Application

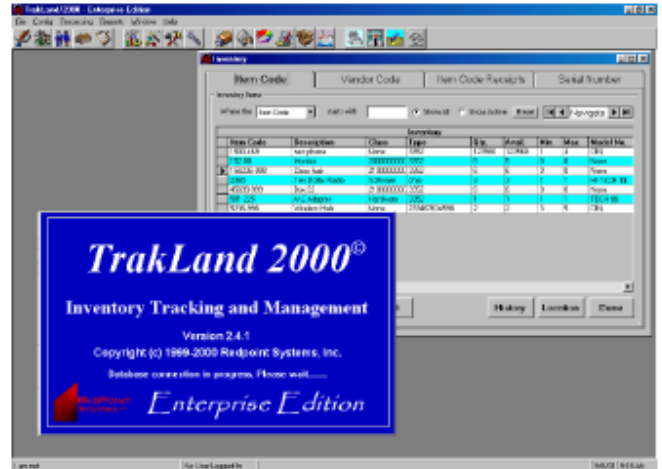
Accurate Collection and Management of Inventory and Business Data in a Comprehensive and Easy To Implement Application

Developed to support a wide range of business processes **TrakLand/2000®** is the perfect solution for any inventory, asset management, or other tracking requirement. The core system supports all the standard inventory and asset transactions: Issues, Receipts, Allocation, Returns, Moves, and Count. Add-on modules are available to support Warehouse Management, Purchasing, Shipping, Work in Process, Point of Sale, Kitting, Maintenance Operations, Integrated Supply, Time and Attendance, and Labor to Job. This modular approach makes **TrakLand/2000®** a highly scalable, robust and cost effective solution for whatever demands your business may have. With our emphasis on training and support you will be assured of life cycle satisfaction.

Windows® based, **TrakLand/2000®** utilizes and supports the most current technologies and works with just about any ODBC compliant database, insuring platform independent database support. **TrakLand/2000®** provides full bar code support for a wide range of AIDC hardware platforms including 802.11b wireless technologies, both terminal emulation and Windows CE®, as well as batch and mobile data collection devices. Easy to configure and use, **TrakLand/2000®** provides many user defined features such as customized screen labels, drag and drop grid layouts, and UDF database fields, allowing business specific configuration. The security management tool provides process specific control at the group and user level.

Applications and Uses

- MRO/Tool Crib Inventory
- Asset Management
- OEM Inventory
- Shipping and Receiving
- Lab Component Tracking
- Counter Sales (POS)
- Maintenance Operations
- Shop Floor Data Collection
- Warehouse Management
- Labor to Job Tracking
- Work In Process
- Kitting
- Document Tracking
- Fleet Management
- Consignment
- Integrated Supply



Key Features

- Support for all inventory transaction move types
- Component/Sub-component tracking
- Multiple vendor/item number cross referencing
- Track items as stock or assets at the item level
- Serialization and lot tracking
- User defined fields for all major tables
- Custom screen text labels
- User configured grids and data displays
- Third party ad-hoc reporting support
- Manufacture and model tracking
- Assign default locations, cost centers, and persons
- Automatic reorder based on min/max levels
- Several levels of unit of measure for each vendor
- Ability to assign items to user defined classes
- Perpetual movement history tracking
- Quick views of item on hand quantities at the location level
- Ability to quickly sort and print movement history for all fields
- All control data (locations, move reason codes, cost centers, persons, etc.) fully user defined
- Robust data import and export capabilities
- Flexible security at the user/activity level
- Support for a wide range of automated data collection devices
- Support for consigned inventory

Optional Module Highlights

Shipping/Distribution

- Robust customer order management
- Generation of pick lists to the location
- Pallet building and tracking
- Partial order processing and tracking
- Cross docking
- Support for FIFO, shelf life, optimum date, and hazardous materials
- Shipping documents and invoicing
- Customer specific pricing

Purchasing

- PO generation, automatic and on demand
- Electronic reordering to vendor
- Can have multiple vendors to an item
- PO reconciliation upon receipt
- Integrated supply chain support

Work In Process

- Robust work order maintenance and generation
- User defined operation, step and instruction maintenance
- Full bill of materials support
- Job progress tracking
- Labor to job tracking
- Component/Sub component tracking
- Inventory flushed at time of job completion or shipping
- Integrated shipping and receiving
- Raw good inventory issues and receipts

Counter Sales (Point of Sale)

- Full support for all standard counter sale operations
- Customer account support including invoicing
- Customer specific pricing to the item level
- Support for rental operations
- Flexible tax levels based on item types and sale amounts
- Tax exempt sales support

Maintenance Operations

- Robust maintenance of work order templates
- User defined operations and instructions, including drawings
- Full bill of materials support including tools
- Scheduled and on-demand maintenance
- Discrepancy/Corrective action tracking
- Maintenance and repair history, including part replacement
- Inventory flushed at time of issue or job completion
- Integrated shipping and receiving
- Inventory and tool issues and receipts

Barcode Label Design and Printing

Kitting

- Work orders placed to a bill of materials
- Integrated shipping and receiving
- Tracking of inventory at the kit and component level
- Work order generation may be based on min/max levels

System Requirements

Server requirements

1. 100% IBM Compatible Pentium 300 MHz or higher.
2. Microsoft Windows® 95, 98, ME, NT (service pack 5 or higher), or 2000.
3. Internet Explorer® 4.1 or higher.
4. 64 MB RAM minimum (128-256MB suggested).
5. 2GB Hard Disk space (10GB or more suggested).
6. VGA or higher monitor at 800x600 or higher resolution (1024x768 or higher suggested).
7. CD-ROM Drive.
8. MS-Windows® Compatible mouse.

Workstation requirements

1. 100% IBM Compatible Pentium/Celeron 100 MHz or higher (300 MHz or higher suggested).
2. Microsoft Windows® 95, 98, ME, NT (service pack 5 or higher), or 2000.
3. Internet Explorer® 4.1 or higher.
4. 32 MB RAM minimum (64-256MB suggested).
5. 100 MB Hard Disk space.
6. VGA or higher monitor at 800x600 or higher resolution (1024x768 or higher suggested).
7. CD-ROM Drive.
8. MS-Windows® Compatible mouse.

Supported database platforms

1. MS-Access®
2. MS-SQL-Server®
3. Oracle® (MS-Windows® and Unix)
4. Pervasive-SQL®
5. ODBC Data Sources

Supported AIDC Hardware

- | | |
|----------------------|----------------|
| • Hand Held Products | • Zebra |
| • Symbol | • Intermec |
| • Linx | • PSC |
| • LXE | • POS Hardware |
| • Datamax | • And More |

